

## VW Group Electrical Female Connectors 1.5mm 3 Pin Kit

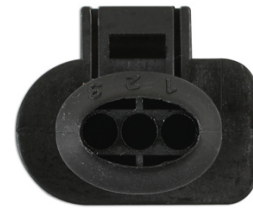
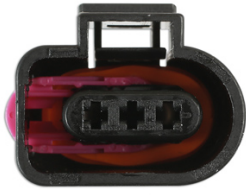
Sensors can be used in any area of the vehicle. Mainly used in the engine bay to protect circuits and important sensors for the engine management system. Sensors are protected by the waterproof seal supplied which is crimped onto the non-insulated terminal. Please use our range of Laser Professional Hand Tools part numbers -7293, 7002, 6547, 3932, 3984 & 4027.



### Additional Information

- 1.5 Series Connectors. Replaces OEM 1J0973703.
- Suitable for cable size 0.35 - 0.5mm<sup>2</sup>.
- Replacement terminals -37375, Replacement grey weatherproof seals -37376.
- Kit contains: 5 x connectors 15 x terminals 15 x seals.
- 35pc

<http://product/37366>



## Related Tools



## Connector & Terminal Removal Kit | 7293

- Application: VW Group (Audi, Seat, Skoda, Volkswagen) vehicles.
- For use on MAF sensor, coil pack, headlight, fog light, level sensor and most terminal blocks on VAG vehicles.
- Designed for use on most push and pull style connectors.
- Also for releasing terminals junior and micro connectors.
- Ideal for use with the following Connect consumable products: Part Nos. 37361 - 37395 or Assorted Boxes, Part Nos. 37396 - 37399.